

# gardentimes

NEWSLETTER OF LEWIS GINTER BOTANICAL GARDEN



## a million blooms

April 1–June 1

Here's a glimpse of what awaits during this year's spring celebration. Every visit features new sights, new delights!

And, if you're planning your own flower garden, check out our horticulture staff's design process on page 4.

[LewisGinter.org](http://LewisGinter.org)

# Message from the Executive Director



2



## Mission

Lewis Ginter Botanical Garden connects people through plants to improve communities.

## editor's box

The *Garden Times* newsletter is mailed three times a year to Lewis Ginter Botanical Garden members.

Volume XXXII, Number 1

**executive director**  
Shane Tippet

**newsletter editor**  
Lynn Kirk

**design**  
Elevation

## Old Friends,

Spring comes softly in Virginia. Not the weather necessarily, which can be gentle or harsh, with snows and gales not being uncommon. For our plants, though, winter can seem like the overture of a Broadway musical: the composer introduces all the major themes the audience will hear throughout the evening, so when the melody of the second act's opening number comes around, it feels like an old friend.

Across the northern tier of states with their shoulders up against the Canadian border, plant dormancy is a survival mechanism. Some trees require a set period with weeks of low temperatures before they will break dormancy with the warmth of spring. The odd warm day, here and there, will not disrupt their internal clock. Dormancy, by comparison, is a relative thing in the mid-Atlantic at the break of the Piedmont. Obvious buds appear on many trees early in winter, and a warm December can prompt cherry blossoms. As winter recedes and the days begin to warm, different species move to the fore, each taking their turn in the limelight before gently bowing out and making way for the next star to shine.

There is a quiet rhythm as we move from winter to spring. And while not dramatic, it can be wholly satisfying. This spring, I invite you to walk into a garden—your garden, the neighborhood garden or this botanical garden—and spend a minute or two with new growth. Notice the blossom in a bank of spring snow. Get up close to a low-hanging branch and observe how impossibly small and delicate are the new leaves at the tips of twigs. Stand way back from that tree, way back, and notice how the hint of new leaves makes the tree look like it is surrounded by green mist. And, because this is the 30th spring of your life, or the 12th, or the 80th, these new young plants will seem very much like the return of old, familiar friends. We know it instinctively, as these plants have been our companions for millennia, and we know it immediately and personally.

It is not a surprise when our old friends re-emerge from the overcast months of winter; they have been providing clues all along that they would return. Welcome them with a glad heart, as a friend should.

Happy spring!

Shane Tippet  
Executive Director



# Special Events & Exhibits

Details at [lewisginter.org](http://lewisginter.org) and [facebook.com/lewisginter](https://facebook.com/lewisginter).  
\*Free for members and included with Garden admission.

## A Million Blooms\*

APRIL 1–JUNE 1

Welcome spring in the Garden! Find out which beauties bloom next at [bit.ly/MillionBLOOMS](http://bit.ly/MillionBLOOMS). And, mark your calendar for these highlights:

- Peek-a-Bloom with Peter Rabbit, April 15–16, Children's Garden.
- Special Evening Event for Garden Week, April 26 (WED. ONLY), open until 9PM.



RACHEL O. LOUGHLIN

3

30<sup>th</sup>  
ANNIVERSARY!

## SPRING PLANTFEST

EXCLUSIVE 'MEMBER ONLY' PRE-SALE: 

THURSDAY, MAY 4 ..... 4-7PM  
PARKING LOT C & GARDEN SHOP

PUBLIC SALE:

FRIDAY, MAY 5 ..... 9AM-5PM  
SATURDAY, MAY 6 ..... 9AM-3PM  
PARKING LOT C & GARDEN SHOP

Time to plant, time to purchase. Don't miss the region's acclaimed resource for plants, container gardens and related accessories, including Ginter's Greatest! Featuring new vendors, a wider range of merchandise, hourly door prizes and live music. Master Gardeners also on site to answer your gardening questions.

**Bonus: Bring your garden tools, kitchen knives and scissors for sharpening by Sharp Again (\$).**

Open free to the public. Rain or shine. Regular admission to enter the Garden. Presented by Garden volunteers with proceeds benefitting the Garden's educational mission. Details at [bit.ly/SpringPlantFest](http://bit.ly/SpringPlantFest).



JASON LANGBERG

## Butterflies LIVE!\*

OPENS APRIL 14  
CONSERVATORY NORTH WING

Explore the world of butterflies: vibrant colors, captivating sights and extraordinary discoveries.

Meet the Butterflies online at [bit.ly/MeetBflies](http://bit.ly/MeetBflies), and enter your favorite pics in the Instagram contest at [bit.ly/InstaBloom](http://bit.ly/InstaBloom).

BETH MONROE



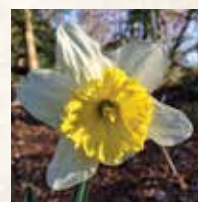
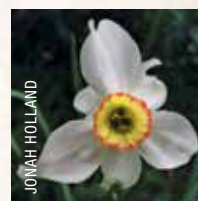
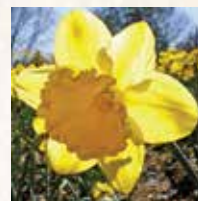
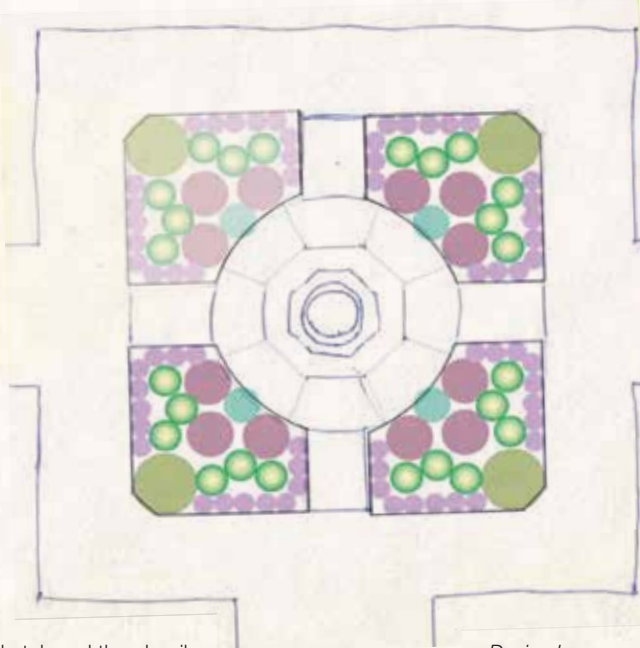
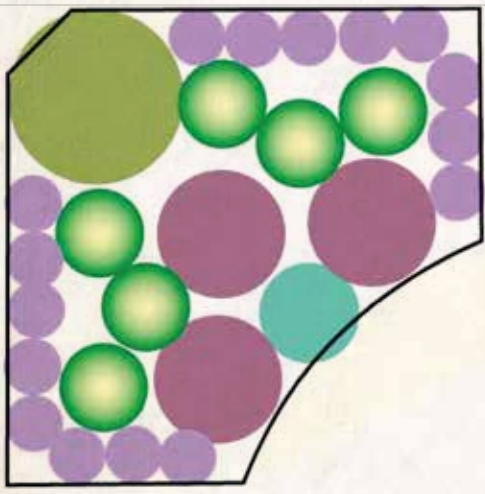
# Horticulture

## From Planning to Planting

Visitors often wonder how the beautiful displays for A Million Blooms are designed, installed and maintained. *All of them are developed by our talented horticulture staff.* Some staff were trained in landscape design, while others developed their skill by working extensively with plant material over the years. Annual designs provide a great opportunity to try out exciting new plants, play with color and texture, and focus on extending bloom cycles throughout the Garden. The design process occurs more than a year in advance, often during snowy mornings or afternoon escapes from Richmond's hottest summer days.

Every staff member tackles designing in a different way. Some start with the plants; a new variety or a throwback to an old favorite sparks creativity for showcasing something that excites them. Others think about what textures, layering and color combinations they want to achieve, filling in with appropriate plants that realize their vision. Both approaches work, and by allowing multiple designers to develop our annual displays, every garden area boasts a different personality.

### design



Designers often create a design collage with a layout sketch and thumbnails of proposed plants. These are submitted to an internal committee and tweaked before approval. The designer takes careful measurements of each bed and calculates the number of plants needed, using a plant's mature size to determine proper spacing. *See image above.*

*Design by  
Leah Purdy*



## layout



### STAFF TIP

To save time, don't work the fertilizer into the soil. Allow it to be incorporated during the planting process.

Before planting, beds are prepared by tilling the soil, raking smooth and top dressing with a thin layer of slow-release fertilizer. Bulbs or small plants are laid out according to careful measurements. Staff often draw out complicated designs with sand.

## maintenance



### STAFF TIP

Select plants with interesting foliage shapes and colors.

Sometimes a high-maintenance plant is worth the effort based on the impact it provides. We may take the time to deadhead tulips, but are careful to combine high- and low-maintenance plants to balance our time. In the summer, elephant ears are a favorite of ours because they require only occasional removal of dead leaves.

## extended bloom time



The Garden always tries to select plants that will bloom throughout the display season. Also, in the fall, we plant violas along with the bulbs in a layered effect, providing winter interest until the bulbs emerge in the spring. Similarly, we stagger the bloom times of our summer annuals to achieve the longest bloom possible.



Our horticulture staff, backed by valued volunteers, work year-round to produce spectacular gardens and landscapes.

**And, we do it all for you!**

# Calendar

*\*Free for members and included with Garden admission.  
Details at [lewisginter.org](http://lewisginter.org).*

## march

### March Madness

DAILY THROUGH MARCH 31

Garden members (only) enjoy 15% discount on purchases in Garden Shop & Cafe all month. Also in Tea House when it reopens March 15.

### Ginter in the Morning

TUESDAY, 7 ..... 10–11AM

Discover seasonal highlights with a knowledgeable garden guide.

Free/member; \$17/non-member.

Pre-registration is required at

[bit.ly/GardenWalks](http://bit.ly/GardenWalks) or 262-9887, ext. 320.

### Annual Spring Forward Volunteer Event

THURSDAY, 30 ..... 6PM

KELLY EDUCATION CENTER, AUDITORIUM

Business meeting & dinner for volunteers and (1) guest.

RSVP to [volunteer@lewisginter.org](mailto:volunteer@lewisginter.org)

or call 262-9887, ext. 335 by March 24.

## april

### A Million Blooms\*

DAILY–JUNE 1 ..... 9AM–5PM

Details page 3.

### Virginia Daffodil Society Show\*

SATURDAY, 1 ..... 2–5PM

SUNDAY, 2 ..... 10AM–3:45PM

KELLY EDUCATION CENTER

Delight in prize-worthy daffodils & visit with expert growers.

Open free to the public.

Included with Garden admission.

### Ginter in the Morning

TUESDAY, 4 ..... 10–11AM

Details in March.

### Richmond African Violet Society Show & Sale

SALE:

FRIDAY, 7 ..... 1–5PM

SATURDAY, 8 ..... 9AM–5PM

SUNDAY, 9 ..... 9AM–4PM

SHOW:

SATURDAY, 8 ..... 1–5PM

SUNDAY, 9 ..... 9AM–4PM

ROBINS VISITORS CENTER

Interesting & unusual African violets on display & for purchase.

Open free to the public.

Regular admission to visit the Garden.

### Tea House Wine Dinners

WEDNESDAY, 12 ..... 6:30PM

"Artist Series," \$70/person.

Menus, reservations & future dates at

[teahouseevents.com](http://teahouseevents.com).

## april *continued*

### Butterflies LIVE!\*

DAILY, APRIL 14–OCTOBER 15 ..... 9AM–5PM

CONSERVATORY NORTH WING

Details page 3.

### Peek-a-Bloom with Peter Rabbit

SATURDAY, 15 & SUNDAY, 16

SATURDAY & SUNDAY ..... 1–4PM

CHILDREN'S GARDEN

Peter Rabbit\* poses for photos.

SATURDAY ONLY ..... 2–3PM

BLOEMENDAAL LAWN

Richmond Concert Band\* presents

"Lions, Tigers & Bears, Oh My!"

SUNDAY ONLY:

SEATINGS ..... 10AM, 11:30AM, 1PM, 2:30PM

LORA ROBINS TEA HOUSE

**New!** Prix Fixe Brunch (\$).

Menu & reservations (began Feb. 7)

at [teahouseevents.com](http://teahouseevents.com).

NO phone reservations please.

Regular Garden admission.

### Seasonal Opening of WaterPlay\*

SATURDAY, 15

CHILDREN'S GARDEN

Weather permitting.

### Adult Tour

SEEING THE GARDEN LIKE A HONEY BEE

TUESDAY, 25 ..... 1–2:30PM

See how honey bees pollinate thousands of flowers while gathering nectar & pollen.

Free/adult member; \$17/non-member.

Pre-registration required at

[bit.ly/GardenWalks](http://bit.ly/GardenWalks) or 262-9887, ext. 320.

### Special Evening Event for Garden Week

WEDNESDAY, 26 (ONLY) ..... UNTIL 9PM

GARDENS & BLOEMENDAAL

Extended hours (one night) for evening garden strolls.

Historic Bloemendaal House tours\* ..... 5–8PM

Casual fare, wine & beer (\$) ..... 5–8PM

Live music:\*

The Triple Crossing Jazz Project ..... 6–8PM

Garden Shop with 15% member (only)

discount ..... 10AM–7PM

Regular Garden admission.

Non-member saves \$1 on (1) Garden

admission with 2017 Garden Week ticket.

Butterflies LIVE! closes 5PM daily due to

butterflies' reduced activity.

Details at [bit.ly/GardenWeekEVE](http://bit.ly/GardenWeekEVE).

## may

### A Million Blooms\*

DAILY–JUNE 1 ..... 9AM–5PM

Details page 3.

### Butterflies LIVE!\*

DAILY–OCTOBER 15 ..... 9AM–5PM

CONSERVATORY, NORTH WING

Details page 3.

### Ginter in the Morning

TUESDAY, 2 ..... 10–11AM

Details in March.

### Spring PlantFest

**New!** EXCLUSIVE 'MEMBER ONLY' PRE-SALE:

THURSDAY, 4 ..... 4–7PM

PUBLIC SALE:

FRIDAY, 5 ..... 9AM–5PM

SATURDAY, 6 ..... 9AM–3PM

Details page 3.



### Mother's Day Weekend Celebration

FRIDAY, 12–SUNDAY, 14

Three-day extended celebration honors mothers & important caregivers!

FRIDAY ONLY:

National Public Gardens Day\* ..... 9AM–5PM

Historic Bloemendaal House

Drop-In Tours\* ..... 11AM–3PM

SATURDAY & SUNDAY:

Make Memories with Mom ..... 9AM–5PM

Walk among A Million Blooms, read,

dine & shop. Food available in Garden Cafe (\$).

SUNDAY ONLY:

SEATINGS ..... 10AM, 11:30AM, 1PM, 2:30PM

LORA ROBINS TEA HOUSE

**New!** Prix Fixe Brunch (\$).

Menu & reservations (began Feb. 7)

at [teahouseevents.com](http://teahouseevents.com).

NO phone reservations please.

Regular Garden admission.

Make a Garden Hat\* ..... 10AM–4PM

Children's Garden

À La Carte Dining ..... NOON–3PM

Bloemendaal Lawn. (\$).

FREE Concert\*: Glennroy Bailey & Co. ... 1–4PM

Bloemendaal Lawn

Lawn chairs & blankets welcome.

No outside food & beverage please.

Regular Garden admission.

## may *continued*

### Botanical Book Club

FRIDAY, 12 ..... 11AM–12PM

LORA ROBINS LIBRARY

Gather with reading enthusiasts, second Friday of every other month.

Book selections at [lewisginter.org/learn/library](http://lewisginter.org/learn/library).

Email [library@lewisginter.org](mailto:library@lewisginter.org) for more info.

Membership encouraged but not required.

### Tea House Wine Dinners

WEDNESDAY, 17 ..... 6:30PM

"Artist Series," \$70/person.

Menus, reservations & future dates at

[teahouseevents.com](http://teahouseevents.com).

### Adult Tour

DANGER, DERRING-DO, AND SOME DISCOMFORT: EXPLORING THE LIVES OF PLANT HUNTERS

TUESDAY, 23 ..... 10–11:30AM

Hear harrowing tales of how garden plants were first discovered. Garden guide:

Maggie Southwick.

Free/adult member; \$17/non-member.

Pre-registration required at

[bit.ly/GardenWalks](http://bit.ly/GardenWalks) or 262-9887, ext. 320.



### Wild Art: A Journey Off-Canvas\*

MAY 26–OCTOBER 1

Richmond's art scene comes alive as local artists entwine art & nature.

Updates at [bit.ly/WILDART](http://bit.ly/WILDART).

Sponsored in part by Altria Group.

### Richmond Rose Society Show\*

SATURDAY, 27 ..... 1–4PM

SUNDAY, 28 ..... 11AM–3:30PM

KELLY EDUCATION CENTER

See specimen rose displays & consult with experts.

Included with regular Garden admission.

### Memorial Day Celebration

MONDAY, 29 ..... 9AM–5PM

FREE admission for military personnel, first responders &/or their dependents, with select discounts in Garden Cafe & Garden Shop.

Show military or first responder ID card

at Admissions.

Details at [bit.ly/FREEDay](http://bit.ly/FREEDay).



# EXHIBITS

## Pinwheels for Prevention Garden\*

APRIL 1-29

### ROSE GARDEN LAWN

3,000+ "planted" pinwheels, each representing a child served this past year by Prevent Child Abuse Virginia's Healthy Families program. *Recognizing Child Abuse Prevention Month.*

## Erica Lohan: Nature in Detail

NOW-APRIL 29

### GINTER GALLERY II

Lohan's highly detailed botanical paintings of natural forms and their imperfections create textile-like patterns with leaves and various flora.



## Pallavi Sen

MAY 3-JUNE 7

### GINTER GALLERY II

New drawings of greenhouses by India- and Richmond-based multi-disciplinary artist Pallavi Sen.

# Save the Date!



## anchors aweigh

### A Garden Soiree

The Board of Associates presents "THREE SHEETS TO THE WIND" on June 9.

Watch for updates about this ticketed event.

# Adult Education Highlights



A seasonal schedule with additional offerings and more detail is posted at [lewisginter.org/adult-education](http://lewisginter.org/adult-education), mailed to members and published in the "Style Weekly" April 5th insert.

## Spring Container Garden Workshop

THURSDAY, APRIL 27 ..... 9AM-NOON

Learn how to plan your container garden, from soil mixes to planting techniques and design tips, including succession planting for seasonal color. Take a completed container home with you. Instructor: Beth Burrell. Bring your own container; soil and plants provided. \$60/member; \$73/non-member.

## How to Draw Stuff (in the Garden)

3 SUNDAYS, MAY 7, 14, 21 ..... 1-4PM

A fun, basic course for those who have always wanted to learn to draw or refresh unused skills. Includes materials as well as a classroom session and time in the Garden. Instructor: Paula Blair. \$103/member; \$142/non-member.

# Spring Hours



## Garden

Daily: 9AM-5PM

April 26 of Historic Garden Week: 9AM-9PM

## Garden Shop

Daily: 10AM-5PM

April 26 of Historic Garden Week: 10AM-7PM

# Dining

## Garden Cafe

Daily: 10AM-4PM

## Lora Robins Tea House

Reopens March 15

Wednesday-Sunday:

11:30AM-2:30PM

Reservations, 262-9887, ext. 399

## PokeMondays

NOW-OCTOBER 30;

MONDAYS ONLY

Garden sets "lures" to attract even more Pokémon





# Children's Garden

*\*Free for members and included with Garden admission.  
Details at lewisginter.org.*



SCOTT ELMQUIST

## Drop-in Activities\*

DAILY, APRIL–OCTOBER

GARDEN DISCOVERY BREEZEWAY

DIY activities are perfect for drop-in visits and exploring nature's mysteries at your own pace.

## Scout Programs

Eager for your Scouts to earn Garden-related badges? Check out these 90-minute sessions:

### Girl Scouts

- Daisy | Blue Bucket
- Brownie | Bugs
- Junior | Flowers
- Junior | Gardener

### Cub Scouts

- Webelos | Into the Woods
- Bear | Fur, Feathers, and Ferns
- Wolf | Grow Something
- Tiger | Backyard Jungle

*\$. Pre-registration required. Leaders, complete online form or call 262-9887, ext. 322 for date availabilities.*

## Birthday + Nature Play

A party like none other! The Children's Garden Birthday Party Package is available on select Saturdays, April–October, for youngsters ages 5–12.

*Contact the children's education assistant at 262-9887, ext. 322.*

## 8 Service Learning Opportunities for Teens

AGES 13–18

Teens harvest produce for the Central Virginia Food Bank, dig in the garden and play with worms in the compost bin while learning about horticulture, environmental education and the importance of food access in our community.

*Details at [bit.ly/YouthVolunteer](http://bit.ly/YouthVolunteer).*

*Application deadline May 1.*



## Wow, What a Weekend!

APRIL 15–16

The Garden will be chock full of celebration and discovery, including Peek-a-Bloom with Peter Rabbit, the launch of WaterPlay (weather permitting) and Butterflies LIVE!

*Details pages 3 and 6.*



JONAH HOLLAND





## Summer Camps

**JUNE–AUGUST, MONDAY–FRIDAY ..... 9AM–NOON**

Summer rocks with Green Adventures: week-long day camp programs for children. Campers learn more about their connection to plants through fun-filled art, crafts and garden exploration.

\$. Pre-registration required. Limited space.

### Ages 4–5

**Growing Mr. McGregor's Garden**

June 19–23 or July 24–28

**Over the River and Through the Woods**

July 10–14 or August 7–11

### Ages 6–8

**Nature in Motion**

June 19–23 or July 10–14

**Amazing Adaptations**

June 26–30 or July 31–August 4

**Crazy about Critters**

July 17–21

**Food, Art & Yoga**

July 24–28 or August 7–11

### Ages 9–12

**Nature in Motion**

June 26–30 or July 31–August 4

**Print Making: Inspired by Nature**

July 17–21

9

## Make the Children's Garden

YOUR FAMILY'S "GO TO" FOR SPRINGTIME DISCOVERY AND PLAY.



"This was and will be Grace's best camp adventure ever!!!!"

— Grateful Mom





# Help Grow the Garden



## Membership Makes It Happen

Our membership program lets you explore the Garden your way, every day, with the membership option that's perfect for you. With our new Friends-level membership you can share the Garden with the people who mean the most to you.

Or, become a Garden Keeper member and immerse yourself in the aspect of the Garden that interests you the most with your own Garden Focus. You also will enjoy invitations to exclusive special events.

As a Garden Keeper your membership support enables the Garden to provide free, nature-based classes and camps for disadvantaged children, grow fresh vegetables for FeedMore (the regional food bank), and support community outreach and education through Beautiful RVA.

And, you help sustain the Garden and its legacy of ever-growing plant collections and new displays that delight and inspire.

Membership makes it happen. Explore which membership is right for you at [lewisginter.org/visit/membership](http://lewisginter.org/visit/membership).

## Online Class Registration with Active Network

Following are answers to frequently asked questions about the Garden's new online registration system. *Remember: We're happy to help as you become familiar with the process!*

**Q: Why isn't my former login working, since it did a few months ago?**

**A:** The Garden transitioned to a new online registration system on November 30, 2016. If you haven't registered online since then, you'll need to create a new online account.

**Q: Do members automatically have an online registration account?**

**A:** No. Please create your account now, or the first time you register for a class, at [apm.activecommunities.com/lewisginter/](http://apm.activecommunities.com/lewisginter/). When creating your account, select "Member" as your "Customer Type" and you'll automatically receive correct pricing.

**Q: Why do I need an online account? Can't I just register as a "Guest"?**

**A:** Your online account is important. Through your personal account, you can register for classes, use your credit card for easy and secure online payments, and print receipts at any time. You can view how many spaces remain in a class and immediately reserve online, or add yourself to a waiting list if a class is full. Before registration opens, you can save classes to your Wish List, and then add your Wish List items to your cart once they become available. Also, you can receive registration reminders and text-message alerts in the event of cancellations.

**Q: When I register multiple people, the system requires adding them as "Family Members," though they aren't related. Why?**

**A:** Adding each person to your "Family" automatically links them within the system. After they are entered, you can select anyone in your "Family" from a drop-down menu.

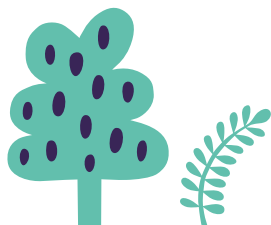
**Other questions?** Email [registrar@lewisginter.org](mailto:registrar@lewisginter.org) or call 262-9887, ext. 320.



## Why Volunteer at the Garden?

With 670 volunteers, we've heard every reason: to learn something new, meet interesting people, make a difference in the community—or simply get out of the house and ENJOY!

Last year alone, our dedicated volunteers provided 47,150 hours of service that helped keep our gardens going and growing. We value each person for their contributions, talents and valuable gifts of time ... and we'd appreciate YOU, too! *Gardening experience is not necessarily a prerequisite, since volunteers provide support in almost every area of the Garden. Explore adult opportunities at [lewisginter.org/volunteer](http://lewisginter.org/volunteer) or call 262-9887, ext. 335.*





# More Ways to Enjoy



## We Bring a Lot to the Table for YOU

Planning a birthday, shower, pre- or post-wedding event? The Garden and Meriwether Godsey—our in-house, four-star caterer—offer a **Celebration Package** that's affordable, elegant and practically effortless. *And, it's topped by a free visit through the Garden!*

### WHAT

Celebrations Package includes delightful pre-selected meal; beautifully appointed room with free rental; linens, china and glassware; attentive service; and complimentary Garden admission.

### PRICE

\$40 per person, plus tax

### WHEN

Saturdays and Sundays (only)  
9:30AM–NOON or 11:30AM–2:00PM

### WHERE

Azalea Room for 24–36 guests  
Robins Room for 37–96 guests

### MORE INFO

[bit.ly/FacilityRental](http://bit.ly/FacilityRental)

### RESERVATION

Contact a facility events coordinator at 262-9887, ext. 345 or 224 or email [facilityevents@lewisginter.org](mailto:facilityevents@lewisginter.org).



## Garden Shop

Just arrived: A colorful collection of wheatgrass and sisal bowls, handwoven in Africa by local artisans. Traditional gifts for major life celebrations—such as weddings, births and graduations—these distinctive baskets symbolize the richness of family, friends and life. As a wall display, they jazz up your home or office while demonstrating your support of fair trade practices.

11



## Explore the Garden with Guided Group Tours

Treat your group to a Garden experience based on the tour of your choice: from Garden history and seasonal highlights to exploration of the Garden's amazing trees. An enthusiastic garden guide who knows and loves the landscape will share favorite sights during the one-hour tour.

Groups wishing to dine at the Garden can reserve an all-inclusive Group Dining Package that ranges from \$28 to \$33 per person. The package includes a guided tour, Garden admission, buffet lunch, facility use and all taxes, fees and gratuity. Explore tour topics, menus and more group options at [bit.ly/GroupTOUR](http://bit.ly/GroupTOUR). Reserve your group tour at least two weeks in advance by completing the online form or calling 262-9887, ext. 320.





Lewis Ginter  
Botanical Garden

1800 LAKESIDE AVENUE  
RICHMOND, VA 23228-4700  
(804) 262-9887  
lewisginter.org

Non-Profit  
Organization  
U S Postage  
**PAID**  
Permit 520  
Richmond, VA



“Springtime is the  
land awakening.”

— Lewis Grizzard

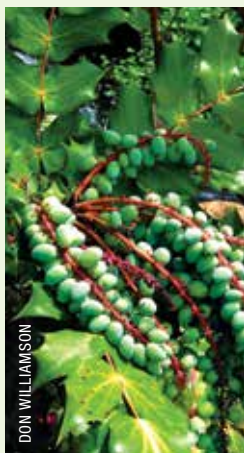
## Bright Spots

### march



Snow crocus  
*Crocus chrysanthus* 'Romance'

### april



Oregon grape holly  
*Mahonia aquifolium*

### may



Flame azalea  
*Rhododendron flammeum*

### trees



Fringe tree  
*Chionanthus virginicus*

### conservatory



Corsage orchid  
*Rhyncattleanthe* Burana Beauty  
'Burana' CCM/AOS