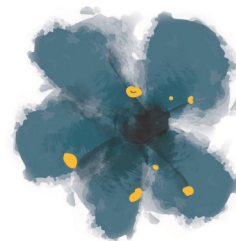


# SEEK GLOBAL INSPIRATION; GARDEN LOCALLY

WINTER SYMPOSIUM

52<sup>nd</sup> CVNLA SHORT COURSE AND PESTICIDE RECERTIFICATION

FEBRUARY 10, 11, 12, 2021



**THURSDAY, FEBRUARY 11**

SPEAKER BIOGRAPHIES

## DR. NOEL KINGSBURY

Dr. Noel Kingsbury is an acclaimed garden designer, best-selling author of numerous books and long-time collaborator of the renowned designer Piet Oudolf. With a doctorate from the University of Sheffield he is a leading figure in naturalistic planting design and the New Perennial Movement. Noel Kingsbury is an international garden designer and writer on gardening, plant sciences and related topics. He is best known for his promotion of naturalistic planting design in gardens and designed landscapes (e.g. the 1996 publication of *The New Perennial Garden*, pub. Frances Lincoln, London), and his 25 year collaboration with Dutch garden and landscape designer Piet Oudolf on books on planting design. He writes sometimes for *The Daily Telegraph*, *Gardens Illustrated* magazine and *The Garden* - the membership magazine of the Royal Horticultural Society. He has worked with Professor Nigel Dunnett, of the University of Sheffield on the first book in English on green roof and related 'green architecture' technologies. In collaboration with Tim Richardson Kingsbury has edited *Vista, the Culture and Politics of Gardens* and co-chairs events at the Garden Museum in London under the title *Vista*. He has worked with several notable garden photographers, such as Marianne Majerus and Andrea Jones. Kingsbury earned a doctorate from the University of Sheffield in 2009, for a thesis on the long term performance of ornamental herbaceous vegetation. He continues to research in this area. Kingsbury has also written a history of plant breeding, *Hybrid, The History and Science of Plant Breeding* (2009). For more information visit [www.noelkingsbury.com](http://www.noelkingsbury.com)

## DR. JAMES HITCHMOUGH

Dr. James Hitchmough is a Professor of Horticultural Ecology in the Department of Landscape Architecture at the University of Sheffield, UK. James is a prolific author, teacher, speaker, researcher, and practitioner. Informed by the specter of climate change, his landscape consultancy work ranges in scale from small gardens to large national parks. In addition to numerous projects in Australia and China, James was the lead planting design and horticultural consultant at the 2012 Olympic Park in London and is currently working on the Big Sky Meadow project for the Royal Horticultural Society. These experiences, combined with his research and endless travels, have provided him with a keen ability to “see over” the climate change horizon. James’ latest book, a complete re-write of the *Dynamic Landscape; Design, Ecology and Management of Naturalistic Urban Planting* was delivered to the publisher in September 2020. *Sowing Beauty: Designing Flowering Meadows from Seed* was published in 2017.

## IAN CATON

Ian Caton has been the owner/operator of Wood Thrush Native Plant Nursery (Formerly Enchanters Garden) since March of 2013 when he took it over from the previous owner (Peter Heus) who had been operating the nursery since the early-mid '90s. Wood Thrush Native Plants is a nursery specializing in native plants of the Appalachian region including West Virginia, Virginia, Pennsylvania, Tennessee and North Carolina. A focus of the nursery is the introduction of new and rare native plants which are little known or underappreciated in the nursery trade.

Previously, Ian Caton had been an employee of Larry Weaner Landscape Associates (a landscape firm specializing in the use and promotion of native plants in landscaping) since 2001. He graduated from Delaware Valley College with a BS in Ornamental Horticulture and Environmental Design. He has an extensive knowledge of native plants, natural communities, and how to incorporate them into the human environment. This experience was gained primarily through his long running relationship with Bowman's Hill Wildflower Preserve as well as long experience designing and installing native landscapes. He has also had the opportunity to work with local governments on the development of landscape plans for public spaces.

## AMY STROSS

Amy Stross is author of the award-winning book, *The Suburban Micro-Farm: Modern Solutions for Busy People*. She specializes in edible and ecologically regenerative home landscapes. Her current adventure is transforming a 4-acre suburban property into a micro-farm with her husband and mischievous farm cat and dog. She writes about small-scale permaculture gardening on her popular website, TenthAcreFarm.com. Amy holds an M.S. in education, and worked as a high school teacher before “dirt therapy” led her to pursue her passion of horticulture. She has also received certification in both Permaculture Design and Community Garden Development. Her work has been published in *Permaculture Design Magazine* (formerly *Permaculture Activist*) and *Mother Earth News*, and can also be found online at *Hobby Farms* and *The Herbal Academy*. For more information visit [www.tenthacrefarm.com](http://www.tenthacrefarm.com)

## CAPITAL TREES, MEG TURNER AND ANNA AQUINO

Capital Trees is an urban greening non-profit made up of passionate people who believe urban green space is critical to a healthy, vital, sustainable city. As a public-private partnership, they bring together the City, corporations, other nonprofits, foundations, and individuals to restore public land/spaces (so often abandoned/forgotten and publicly owned) so that they are environmentally stable and beautiful. The organization advocates for green infrastructure in our city to support healthy outdoor places and works with the City and other partners to harness the full potential of Richmond’s green assets. Signature projects include the Low Line and Great Shiplock Park. For more information visit [www.capitaltrees.org](http://www.capitaltrees.org)

## MEG TURNER

Meg Turner, principal of M. Turner Landscapes, is a Richmond landscape and furniture designer. She is currently chair of Capital Trees, on the board of the Virginia Urban Forest Council, and a member of the James River Park System Invasive Task Force. She holds BA and Law degrees from the University of Virginia, and a certificate of Landscape Design from George Washington University.

## ANNA AQUINO

Anna Aquino, A native of Petersburg, Virginia, earned an undergraduate degree in Environmental Sciences from University of Virginia and a Master of Science in Horticulture from Virginia Tech. In 1991 she achieved a Master of Landscape Architecture from Harvard’s Graduate School of Design. After several internships with Ralph Higgins Landscape Architects, she struck out on her own to form Botanica, a boutique landscape design business based in Richmond. Inspired to help others experience the power and beauty of creating garden environments, she served as an adjunct teacher with George Washington University’s Richmond-based landscape design program for seven years and mentored children at Chimborazo Elementary School for three years. In 2017 she began working with Richmond’s Capital Trees, a nonprofit dedicated to building public landscapes equitably, and in 2019 joined their Board of Trustees. As chair of the organization’s Projects Committee, she introduced and implemented organic and sustainable management of its public landscape projects. In 2020 Anna was awarded the deLacy Gray Medal of Conservation for her contributions in environmental matters. For Anna, the best times happen outside, and her interests enduringly lie in creating great outdoor places where people live and work. Anna and her husband, architect Charles Aquino, live and work in Richmond and on the Chesapeake Bay with their beloved dogs.