

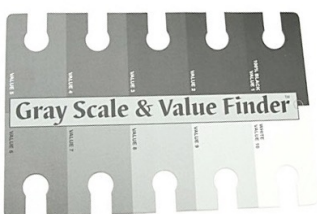
Drawing Plants Supply List

The following list is for artists taking the Drawing the Beauty of Plants class. This class works in graphite only. You will add and subtract to this list as time goes by. Please refer to the **Foundation Drawing Material List for the basic required supplies**. Watch the Supply List video on the class page for more information about these supplies. **Please note:** These suppliers are NOT required for the class. They are helpful but in trying to keep costs down you DO NOT have to purchase them. I normally buy my supplies online at [Amazon.com](https://www.amazon.com) or [DickBlick.com](https://www.dickblick.com). All links are clickable (in blue) on this page and take you to Amazon where you can purchase the supplies.



The Proportional Divider-

This is a measuring tool that allows you to scale up and scale down your object and stay in proper perspective and ratio. You can purchase them in [Solid Brass](#) or [Plastic](#).



[Gray Scale & Value Finder](#)- This handy dandy piece of cardboard has the shades of gray you will create in graphite. The cut outs on each tone help to convert color to the correspondent grey scale value.

[Flexible 12" Ruler](#)- This is used to draw stems and long tapered lines. It is great for creating curves and flowing lines.

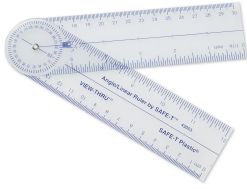


[Frog](#)- This little metal “frog” is used to hold flowers and other botanical specimens. It is used in Floral Arranging to keep the plants upright.

[Helping Hands](#)- This comes with a heavy base, 2 pivoting alligator clips and a small magnifying glass. It is used in electronics but is great to put small branches and flowers on while drawing.



Drawing Plants Supply List



Angle Finder- This clear plastic angle finder can also be used as a ruler. I use it to check on the angle of things when I am drawing and also as a ruler.

The OTT-Lite- Is a great addition to the artists' studio. The bulbs mimic daylight for true color matching. It also is on a pivot. I use this to set up my scientific lighting. It comes in a variety of sizes, from table top to floor models and even a battery operated model; great for traveling.



Sketch Book- This is a personal choice. You should look for the quality of the paper you want to draw on first. I have purchased sketchbooks because of the cover, size or style only to be disappointed with the paper inside. When it comes down to it, don't go for cool, pretty or funky..... go for the paper! If you are going to work in ink, look for something that won't bleed through to the other side. I like the Moleskin Watercolor Sketchbook but there are so many out there to choose from.

**Questions? Contact Mindy MLighthipe@mac.com
www.MindyLighthipe.com**